



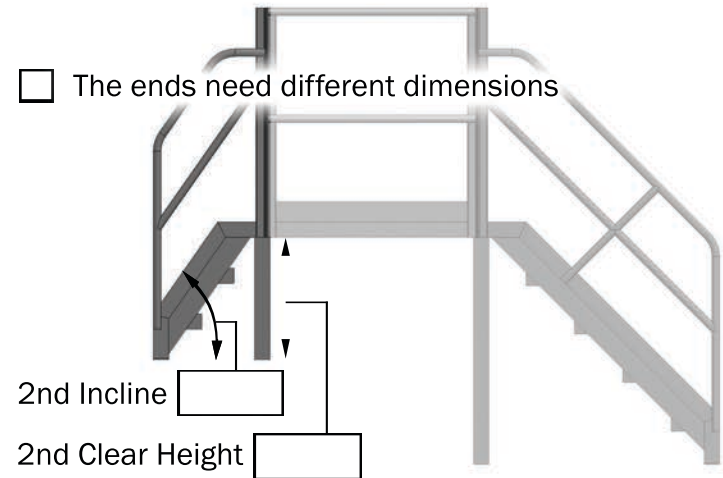
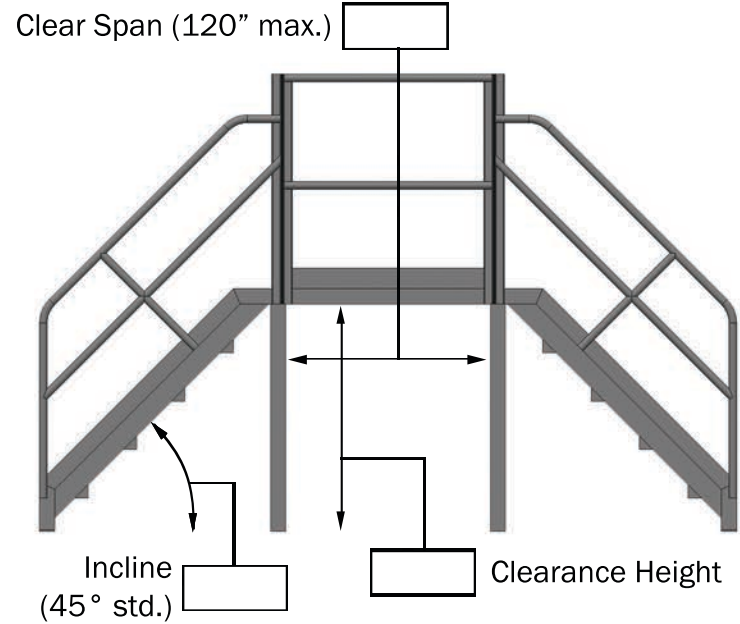
Straight Crossover Specification Form



Stairs or ladders will be used depending on the inputs provided



Step Width
(16" min., 24" std.)



Capacity requirement:

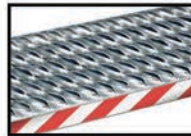
(lbs. or persons)

Color choice: Gray Yellow

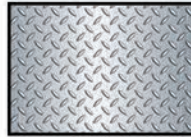
Other:
specify RAL code for color match

Step Type Options

Grip Strut (std.)
(open grating with high-grip teeth)



Diamond Plate
(solid with anti-slip patterned surface)



Fully enclosed
 Diamond Plate steps
(no openings)



Please submit a completed form to design@safe-t-fab.com to request a proposal